

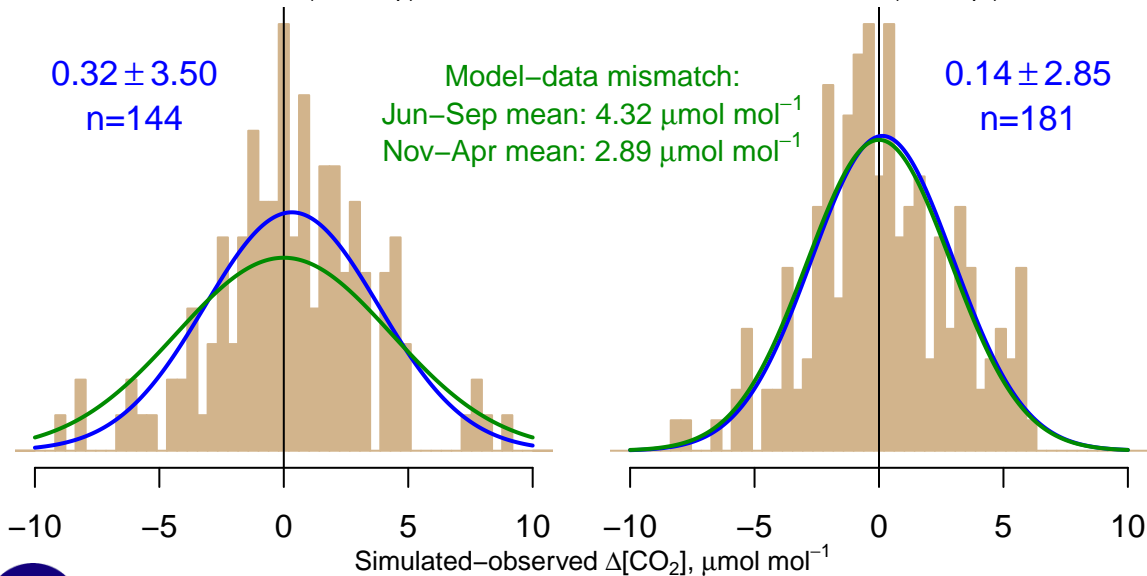
NH "Summer" (Jun–Sep)

$0.32 \pm 3.50$   
 $n=144$

Model–data mismatch:  
Jun–Sep mean:  $4.32 \mu\text{mol mol}^{-1}$   
Nov–Apr mean:  $2.89 \mu\text{mol mol}^{-1}$

NH "Winter" (Nov–Apr)

$0.14 \pm 2.85$   
 $n=181$



Data from 05–May–2009 to 28–Mar–2019

