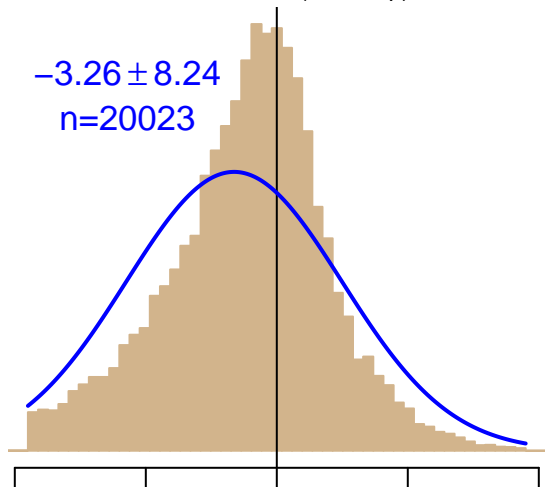


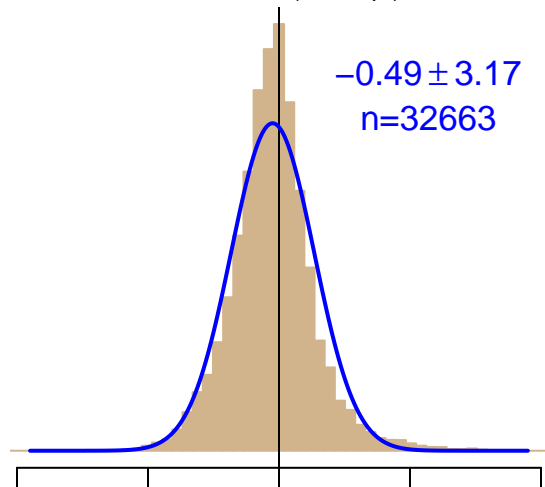
NH "Summer" (Jun–Sep)

$-3.26 \pm 8.24$   
 $n=20023$



NH "Winter" (Nov–Apr)

$-0.49 \pm 3.17$   
 $n=32663$



Simulated–observed  $\Delta[\text{CO}_2]$ ,  $\mu\text{mol mol}^{-1}$

Data from 20–Jun–2005 to 31–Dec–2017



*co2\_dem\_tower-insitu\_20\_allvalid-45magl  
CT2019B, created 17–Dec–2020 15:40*