

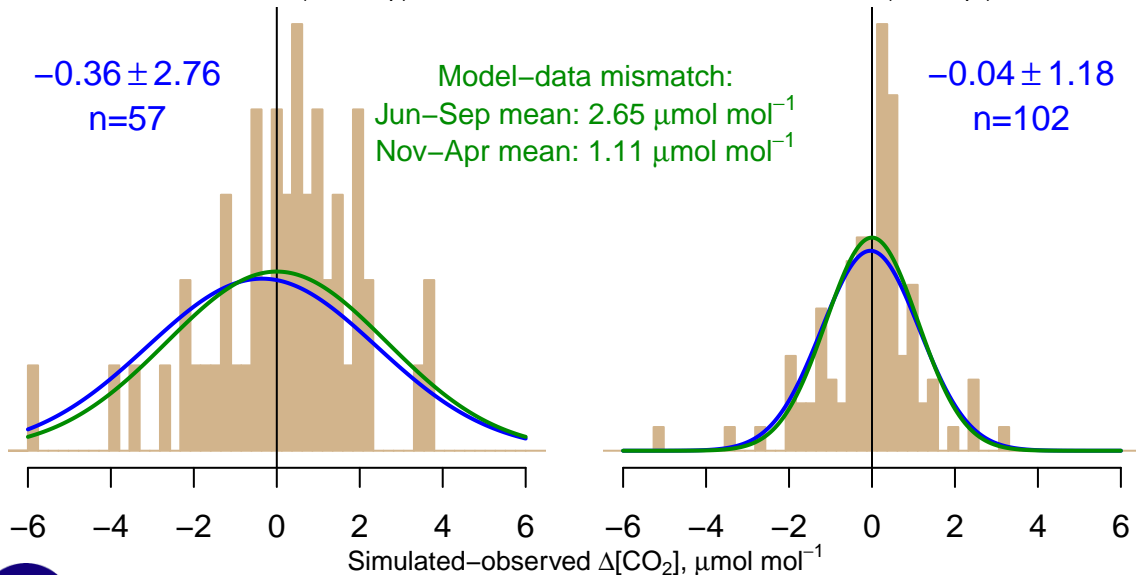
NH "Summer" (Jun–Sep)

-0.36 ± 2.76
 $n=57$

Model–data mismatch:
Jun–Sep mean: $2.65 \mu\text{mol mol}^{-1}$
Nov–Apr mean: $1.11 \mu\text{mol mol}^{-1}$

NH "Winter" (Nov–Apr)

-0.04 ± 1.18
 $n=102$



Data from 17–Jan–2001 to 18–Nov–2007

