

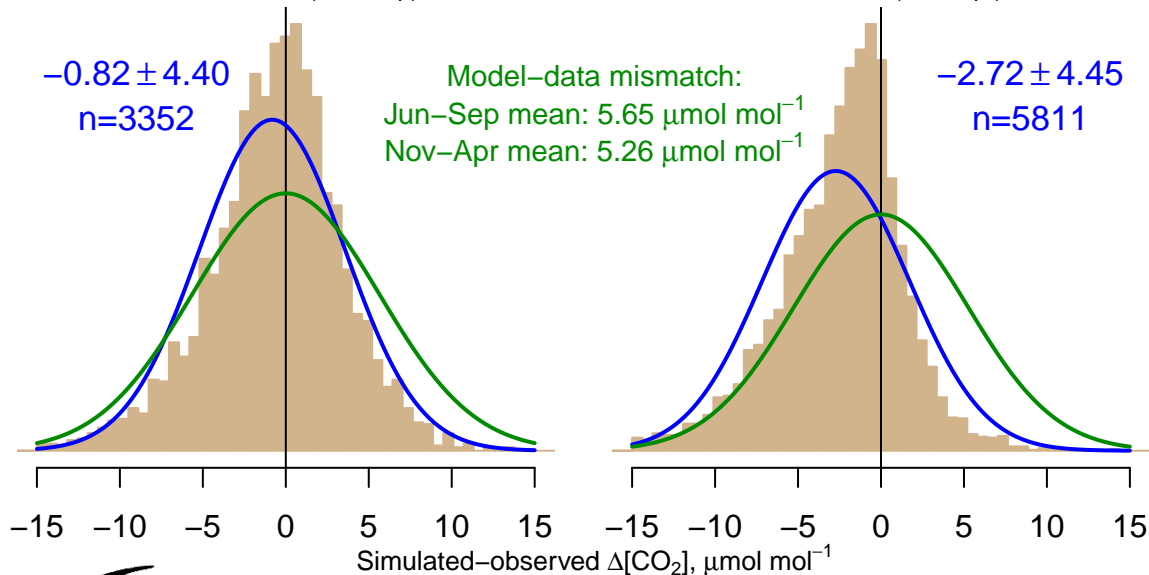
NH "Summer" (Jun–Sep)

-0.82 ± 4.40
 $n=3352$

Model–data mismatch:
Jun–Sep mean: $5.65 \mu\text{mol mol}^{-1}$
Nov–Apr mean: $5.26 \mu\text{mol mol}^{-1}$

NH "Winter" (Nov–Apr)

-2.72 ± 4.45
 $n=5811$



Data from 05–Sep–2004 to 28–Jul–2013

