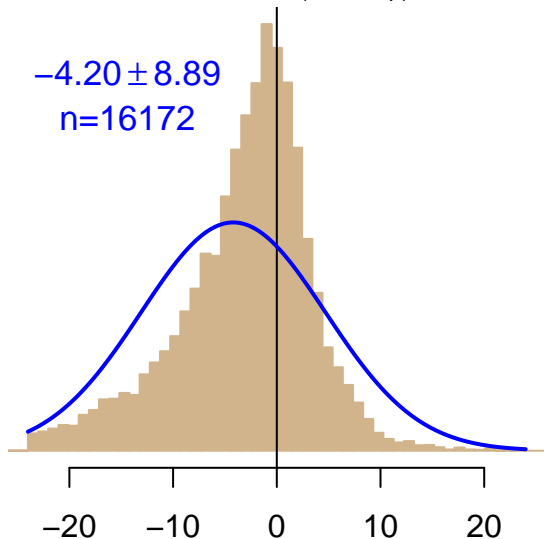


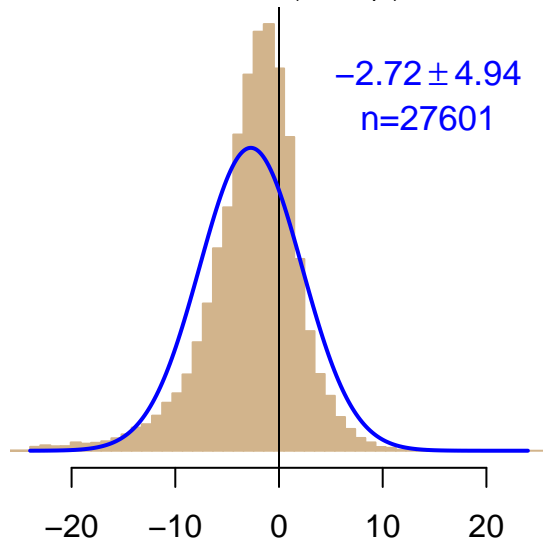
NH "Summer" (Jun–Sep)

-4.20 ± 8.89
 $n=16172$



NH "Winter" (Nov–Apr)

-2.72 ± 4.94
 $n=27601$



Simulated–observed $\Delta[\text{CO}_2]$, $\mu\text{mol mol}^{-1}$

Data from 04–Sep–2004 to 29–Jul–2013



co2_igr_tower-insitu_20_allvalid-24magl
CT2019B, created 17–Dec–2020 15:49