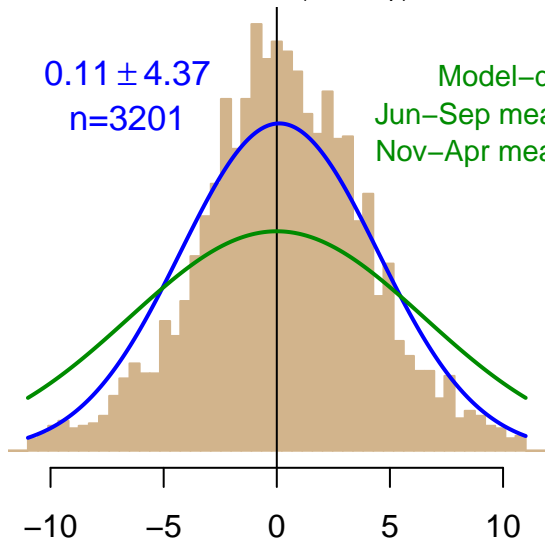


NH "Summer" (Jun–Sep)

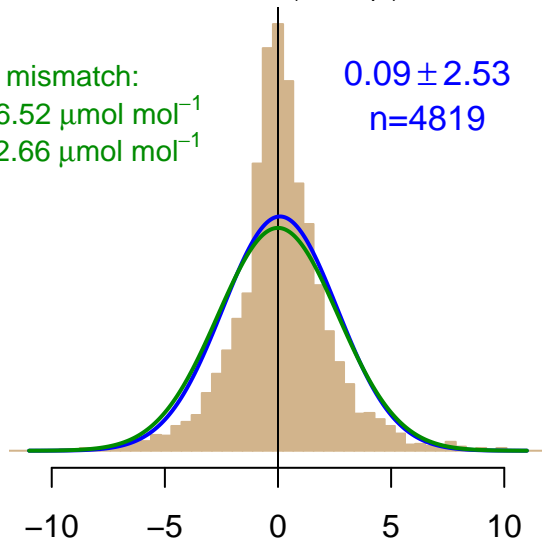
0.11 ± 4.37
 $n=3201$

Model–data mismatch:
Jun–Sep mean: $6.52 \mu\text{mol mol}^{-1}$
Nov–Apr mean: $2.66 \mu\text{mol mol}^{-1}$



NH "Winter" (Nov–Apr)

0.09 ± 2.53
 $n=4819$



Simulated–observed $\Delta[\text{CO}_2]$, $\mu\text{mol mol}^{-1}$

Data from 01–Jan–2001 to 25–May–2009



WISCONSIN
UNIVERSITY OF WISCONSIN-MADISON

co2_lef_tower-insitu_1_allvalid-11magl
CT2019B, created 17–Dec–2020 15:54