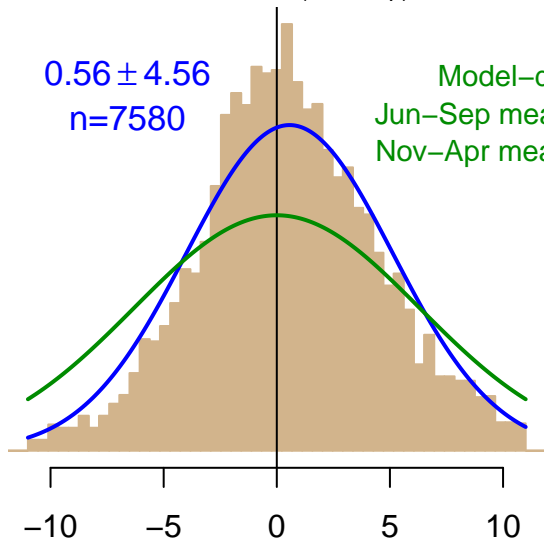


NH "Summer" (Jun–Sep)

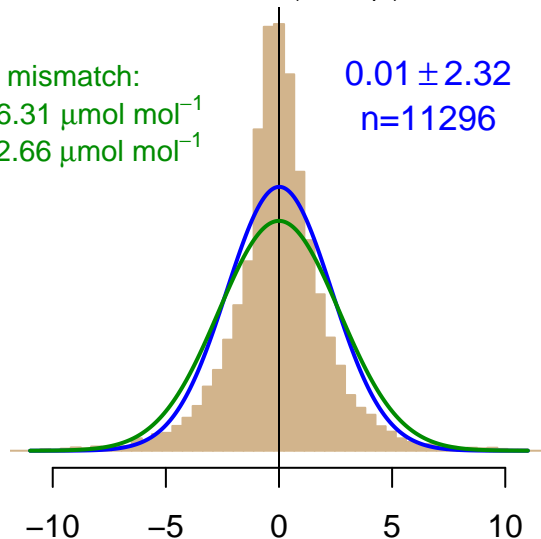
$0.56 \pm 4.56$   
 $n=7580$

Model–data mismatch:  
Jun–Sep mean:  $6.31 \mu\text{mol mol}^{-1}$   
Nov–Apr mean:  $2.66 \mu\text{mol mol}^{-1}$



NH "Winter" (Nov–Apr)

$0.01 \pm 2.32$   
 $n=11296$



Simulated–observed  $\Delta[\text{CO}_2]$ ,  $\mu\text{mol mol}^{-1}$

Data from 01–Jan–2001 to 29–Mar–2019



WISCONSIN  
UNIVERSITY OF WISCONSIN-MADISON

co2\_1ef\_tower-insitu\_1\_allvalid-122magl  
CT2019B, created 17–Dec–2020 15:54