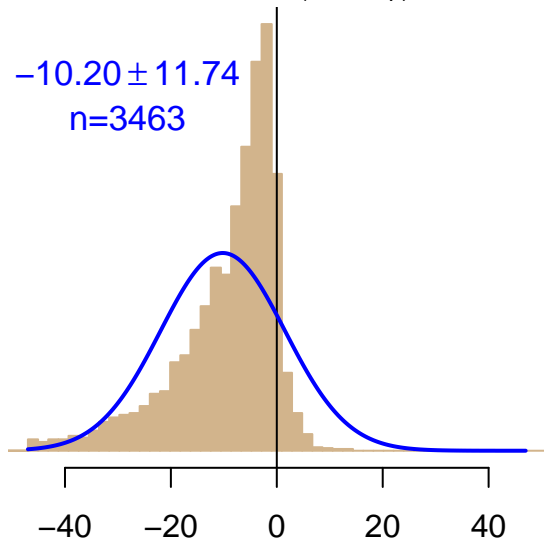


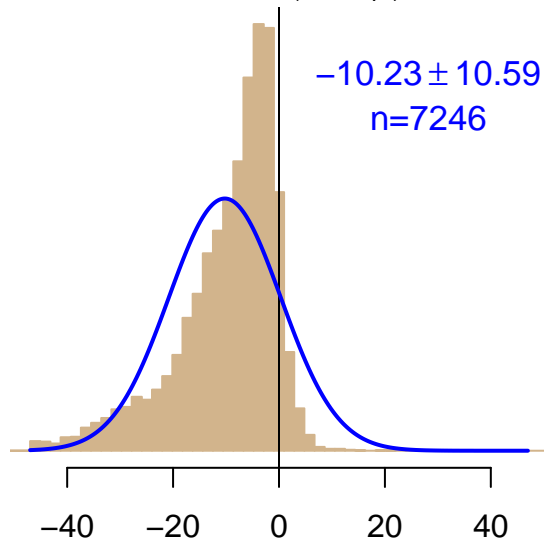
NH "Summer" (Jun–Sep)

-10.20 ± 11.74
 $n=3463$



NH "Winter" (Nov–Apr)

-10.23 ± 10.59
 $n=7246$



Simulated–observed $\Delta[\text{CO}_2]$, $\mu\text{mol mol}^{-1}$

Data from 17–Nov–2010 to 13–Mar–2014



*co2_tf1_shipboard-insitu_20_allvalid
CT2019B, created 17–Dec–2020 16:11*