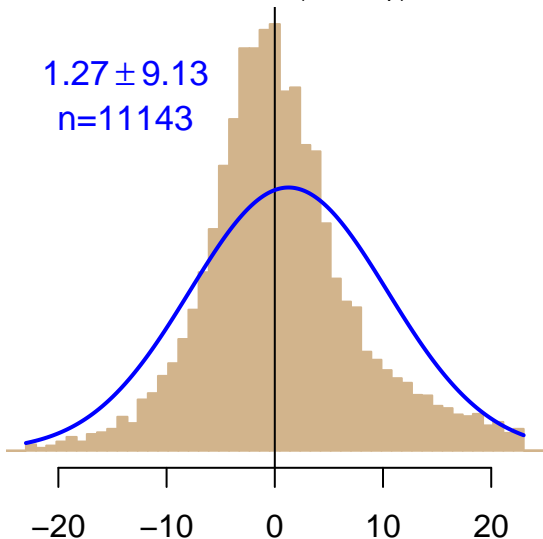


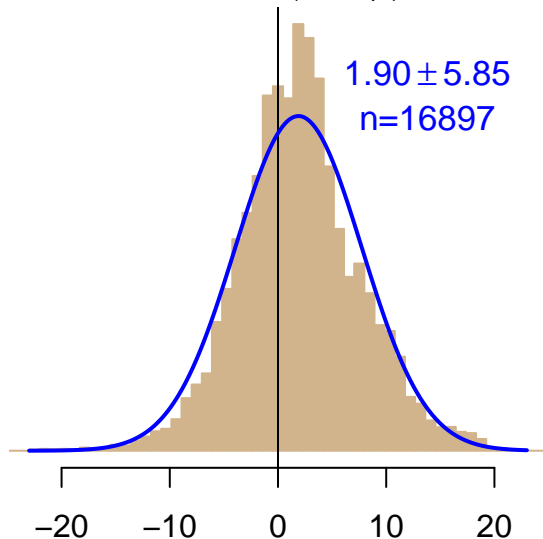
NH "Summer" (Jun–Sep)

$1.27 \pm 9.13$   
 $n=11143$



NH "Winter" (Nov–Apr)

$1.90 \pm 5.85$   
 $n=16897$



Data from 22–May–2005 to 07–Mar–2013



*co2\_yak\_tower-insitu\_20\_allvalid-77magl*  
*CT2019B, created 17–Dec–2020 16:18*