

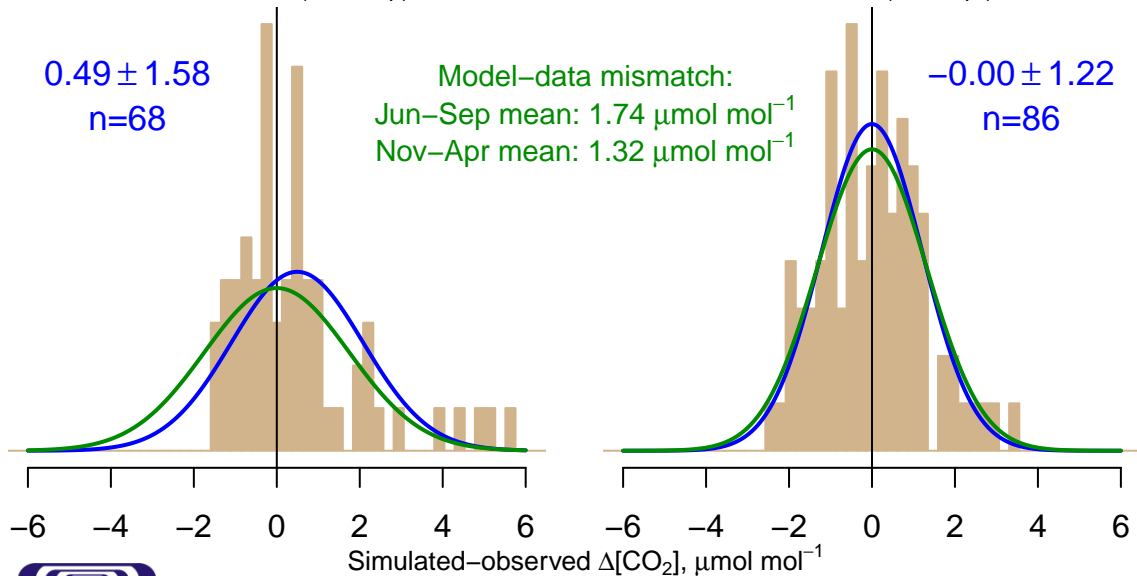
NH "Summer" (Jun–Sep)

0.49 ± 1.58
n=68

Model–data mismatch:
Jun–Sep mean: $1.74 \mu\text{mol mol}^{-1}$
Nov–Apr mean: $1.32 \mu\text{mol mol}^{-1}$

NH "Winter" (Nov–Apr)

-0.00 ± 1.22
n=86



Simulated–observed $\Delta[\text{CO}_2]$, $\mu\text{mol mol}^{-1}$

Data from 27–Jan–2010 to 27–Dec–2012

co2_alf_aircraft-pfp_26_representative_3000–4000masl

CT2019B, created 17–Dec–2020 15:28

