

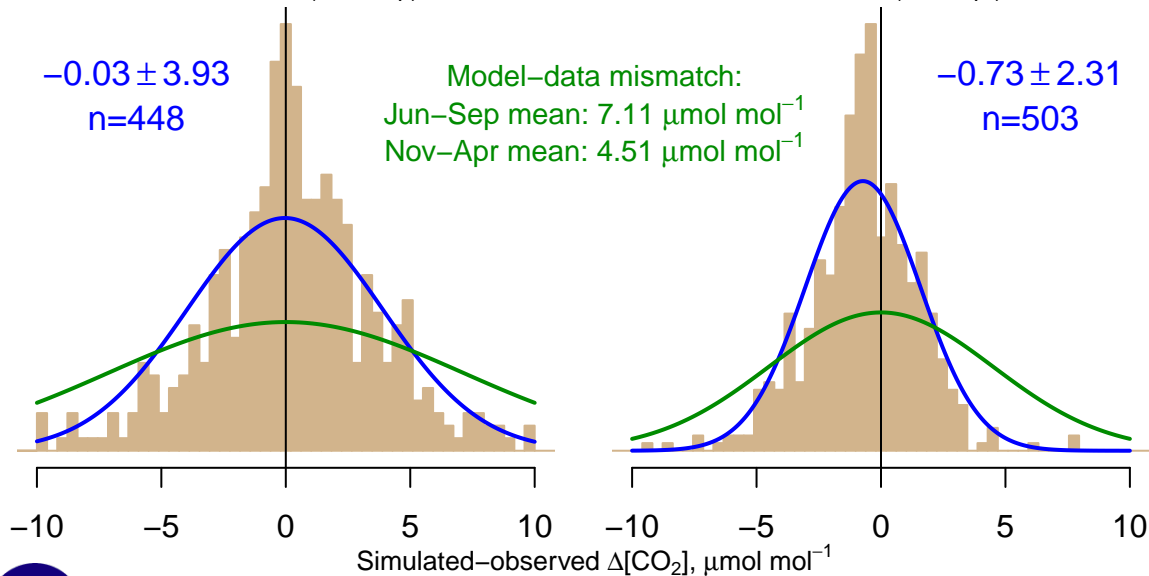
NH "Summer" (Jun–Sep)

-0.03 ± 3.93
 $n=448$

Model–data mismatch:
Jun–Sep mean: $7.11 \mu\text{mol mol}^{-1}$
Nov–Apr mean: $4.51 \mu\text{mol mol}^{-1}$

NH "Winter" (Nov–Apr)

-0.73 ± 2.31
 $n=503$



Data from 22–Oct–2011 to 01–Feb–2019

