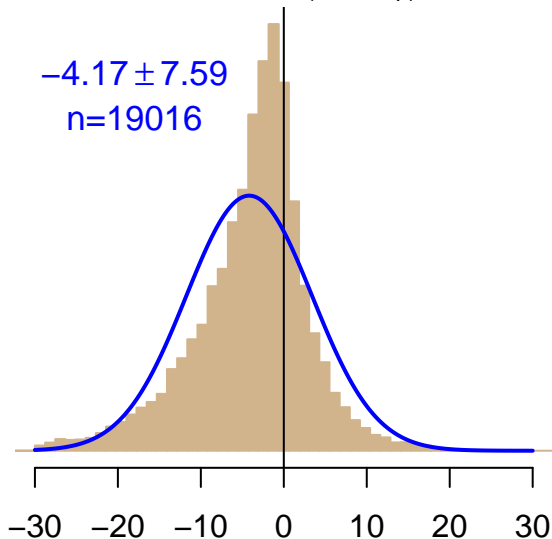


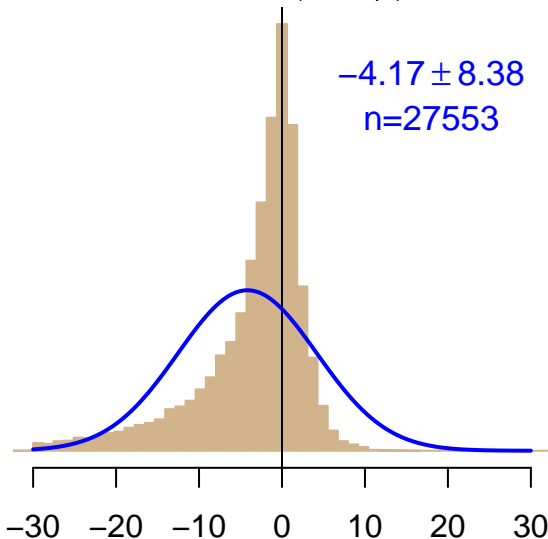
NH "Summer" (Jun–Sep)

$-4.17 \pm 7.59$   
 $n=19016$



NH "Winter" (Nov–Apr)

$-4.17 \pm 8.38$   
 $n=27553$



Simulated–observed  $\Delta[\text{CO}_2]$ ,  $\mu\text{mol mol}^{-1}$

Data from 01–Aug–2007 to 26–Jul–2016

