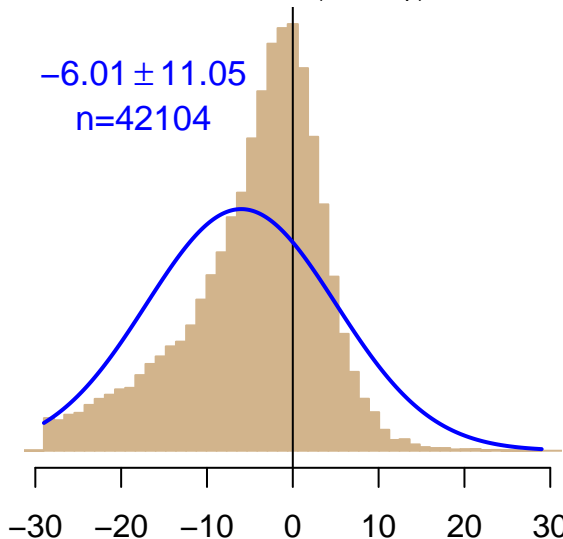


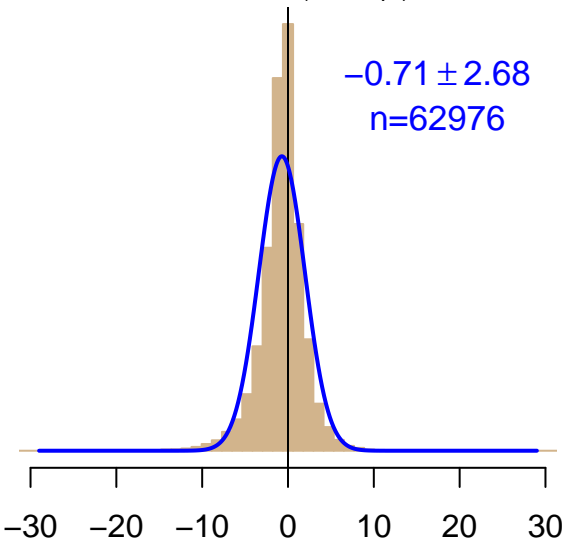
NH "Summer" (Jun–Sep)

$-6.01 \pm 11.05$   
 $n=42104$



NH "Winter" (Nov–Apr)

$-0.71 \pm 2.68$   
 $n=62976$



Simulated–observed  $\Delta[\text{CO}_2]$ ,  $\mu\text{mol mol}^{-1}$

Data from 01–Jan–2001 to 27–May–2020