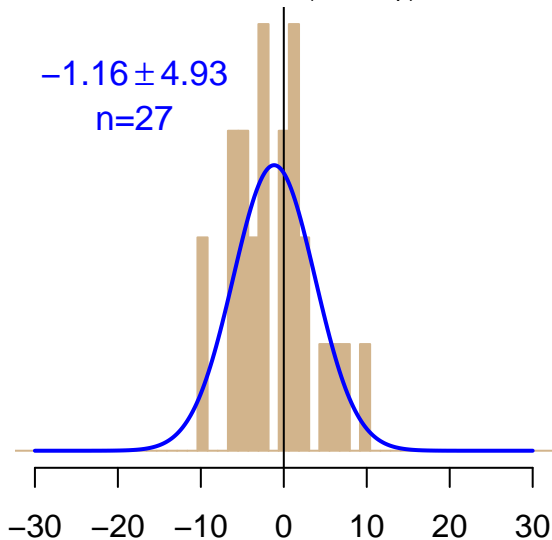


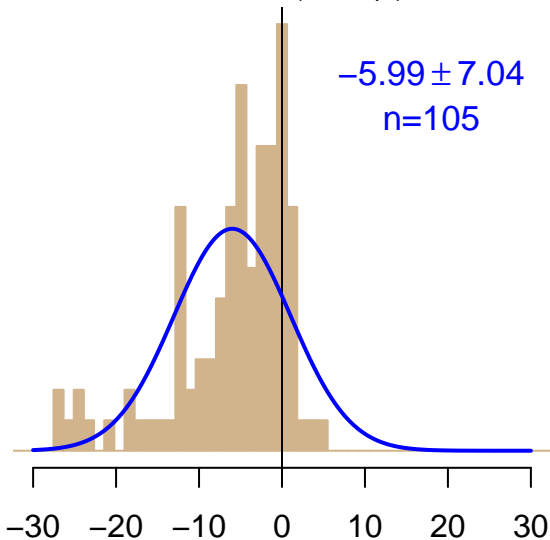
NH "Summer" (Jun–Sep)

-1.16 ± 4.93
 $n=27$



NH "Winter" (Nov–Apr)

-5.99 ± 7.04
 $n=105$



Simulated–observed $\Delta[\text{CO}_2]$, $\mu\text{mol mol}^{-1}$

Data from 12–Jan–2001 to 17–Feb–2021

