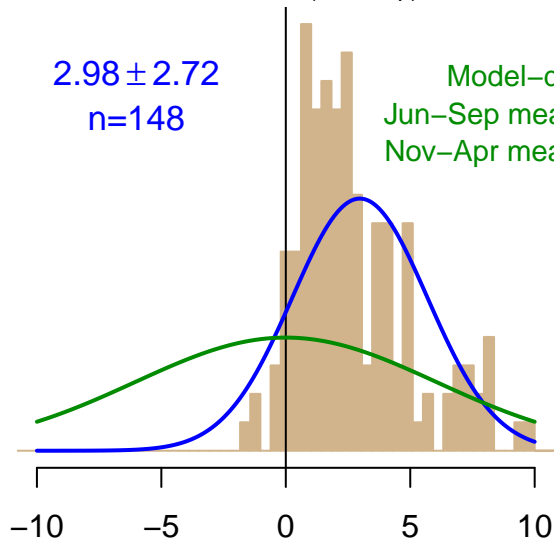


NH "Summer" (Jun–Sep)

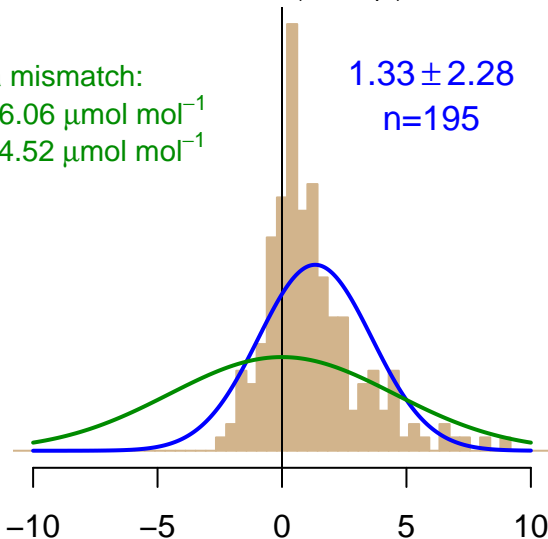
2.98 ± 2.72
 $n=148$

Model–data mismatch:
Jun–Sep mean: $6.06 \mu\text{mol mol}^{-1}$
Nov–Apr mean: $4.52 \mu\text{mol mol}^{-1}$



NH "Winter" (Nov–Apr)

1.33 ± 2.28
 $n=195$



Simulated–observed $\Delta[\text{CO}_2]$, $\mu\text{mol mol}^{-1}$

Data from 08–Jan–2001 to 10–Dec–2020

