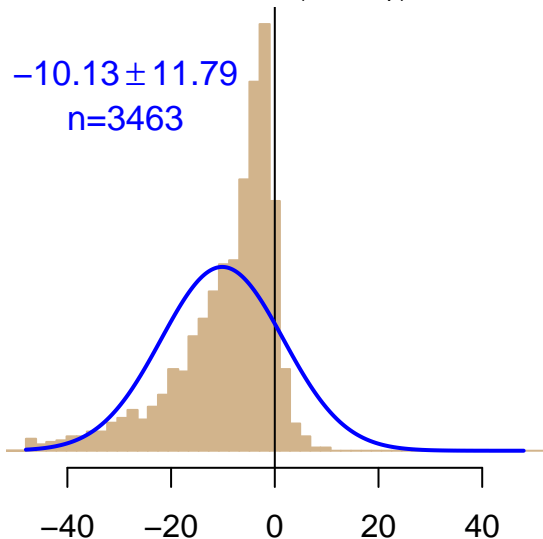


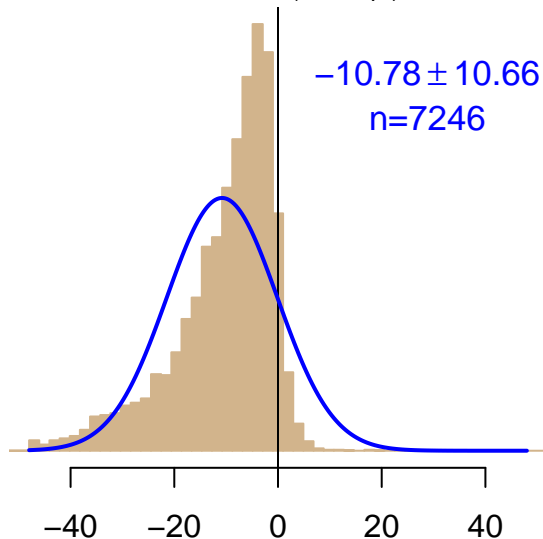
NH "Summer" (Jun–Sep)

-10.13 ± 11.79
 $n=3463$



NH "Winter" (Nov–Apr)

-10.78 ± 10.66
 $n=7246$



Simulated–observed $\Delta[\text{CO}_2]$, $\mu\text{mol mol}^{-1}$

Data from 17–Nov–2010 to 13–Mar–2014



*co2_tf1_shipboard-insitu_20_allvalid
CT2022, created 20–Jan–2023 18:56*