

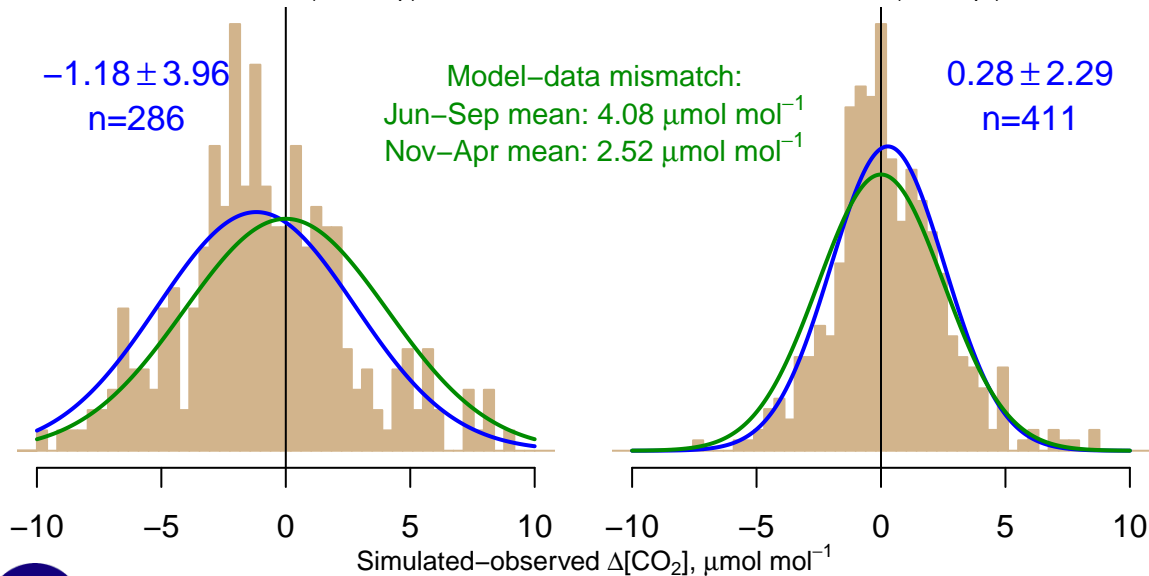
NH "Summer" (Jun–Sep)

-1.18 ± 3.96
 $n=286$

Model–data mismatch:
Jun–Sep mean: $4.08 \mu\text{mol mol}^{-1}$
Nov–Apr mean: $2.52 \mu\text{mol mol}^{-1}$

NH "Winter" (Nov–Apr)

0.28 ± 2.29
 $n=411$



Data from 03–Jan–2001 to 14–Oct–2020



co2_uum_surface-flask_1_representative
CT2022, created 20–Jan–2023 19:00