

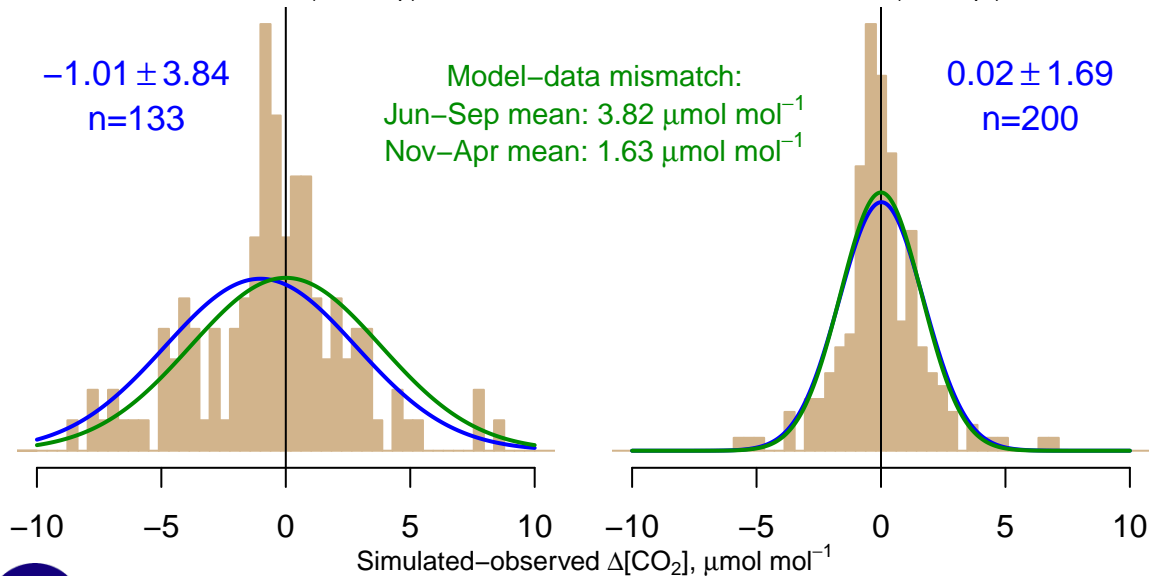
NH "Summer" (Jun–Sep)

-1.01 ± 3.84
 $n=133$

Model–data mismatch:
Jun–Sep mean: $3.82 \mu\text{mol mol}^{-1}$
Nov–Apr mean: $1.63 \mu\text{mol mol}^{-1}$

NH "Winter" (Nov–Apr)

0.02 ± 1.69
 $n=200$



Data from 07–Nov–2004 to 21–Feb–2021

co2_wbi_aircraft-pfp_1_allvalid_1000–2000masl
CT2022, created 20–Jan–2023 19:01

