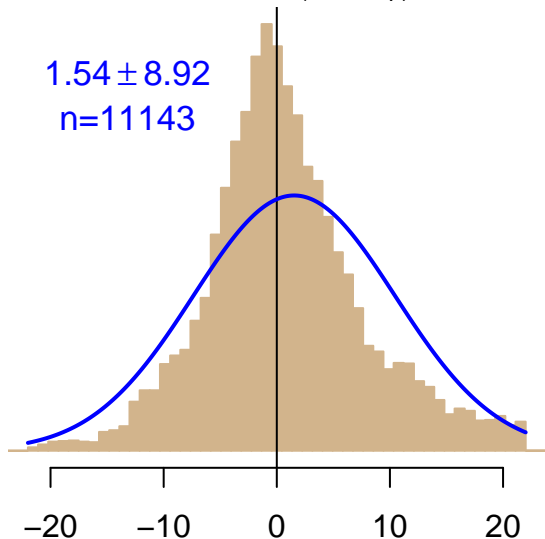


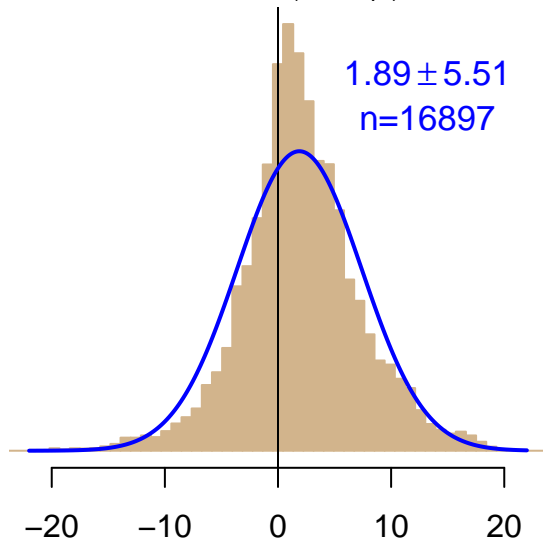
NH "Summer" (Jun–Sep)

$1.54 \pm 8.92$   
 $n=11143$



NH "Winter" (Nov–Apr)

$1.89 \pm 5.51$   
 $n=16897$



Simulated–observed  $\Delta[\text{CO}_2]$ ,  $\mu\text{mol mol}^{-1}$

Data from 22–May–2005 to 07–Mar–2013



*co2\_yak\_tower-insitu\_20\_allvalid-77magl*  
*CT2022, created 20–Jan–2023 19:03*